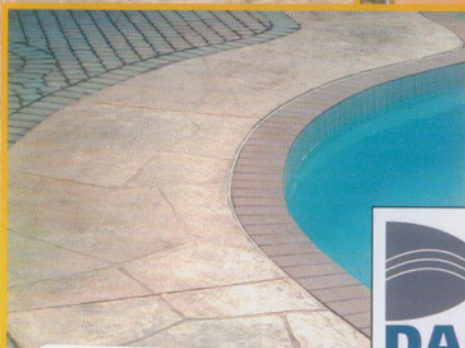


# SpreadStone™

TEXTURED STONE COATING



**The Look  
and Feel  
of Stone  
- Indoors  
and Out!**



## THE MULTI-SURFACE DECORATIVE SOLUTION

Beautify and protect almost any existing surface with easy-to-apply DAICH Coatings "SpreadStone."

It's a highly workable stone coating that adds outstanding beauty and durability to existing porches, pool decks, interior floors, countertops and more!

Pre-mixed with no ingredients to measure and no messy blending.

Tinting can be done with standard colorants your DAICH dealer already uses to tint paint.

Using a few simple techniques, you can create effects in almost any colour or texture you desire.

You can create the look of natural stone or ceramic tile on almost any interior or exterior surface.

You can also customize factors like slip resistance, general cleanability and surface sheen to suit your specific requirements through various application techniques.

**Now create tough, beautiful SpreadStone™ surfaces quickly and easily with the DAICH FAUX TEXTURE ROLLER.**

Create desired texture effects and color blends in just minutes.

\*\*See instructions for complete details.



## PERFORMANCE FEATURES:

- Repels water
- Resists salt damage
- Excellent UV resistance
- Excellent freeze/thaw resistance
- Resists cracking, chipping, peeling
- Resists impact and abrasion
- Low maintenance & easy to clean
- Non-yellowing
- Excellent flexibility
- Covers hairline cracks in concrete

For more information  
and detailed application  
instructions visit us at:  
**[www.daichcoatings.com](http://www.daichcoatings.com)**

SpreadStone® is a trademark of Daich Coatings Corporation

**INTERIOR FLOORS**

**COUNTERTOPS**

**EXTERIOR SURFACES**

**ConQuip Technologies**  
Precision Concrete Equipment • Consulting & Testing  
1403 Meriden-Waterbury Road • Milford, CT 06467  
(860) 621-2000 • TOLL FREE: (888) TO-LEVEL • Fax: (860) 378-3970  
[www.ConQuipTech.com](http://www.ConQuipTech.com)



# SpreadStone<sup>TM</sup>

TEXTURED STONE COATING

You don't have to be a skilled artist to install SpreadStone on your porch, countertop – or kitchen floor!

Pick your skill level below and begin creating stunning SpreadStone finishes today.



Create beautiful SpreadStone<sup>®</sup> stone finishes with your choice of trowel or texture roller...

## 12 STANDARD STORE-TINTED COLORS

White	Raw Grey	Dolphin	Cool Grey
Gunite	Ivory	Almond	Mojave Sand
Tuscany	Rivershore	Chestnut	Burnt Orange

\*Since SpreadStone is not paint, tint results are approximate and may vary slightly from printed color cards and brochures. The colors shown above can be modified to produce alternate tones. Other "approximate" custom colors may also tintable.

## BEGINNER

- You prefer to use a roller. NOT A TROWEL
- You want to install an attractive floor finish quickly and easily – WITHOUT ANY SPECIAL SKILL OR CREATIVE ABILITY



**1) Roll it:** Roll SpreadStone<sup>®</sup> uniformly onto the primed surface at about 1/16" thickness using the DAICH Faux Texture Roller. The roller will naturally do the texturing effects for you.

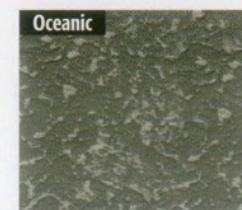
**2) Sand it:** Sand the finish (with 60 grit sandpaper) to refine the texture and create a smoother stone or ceramic appearance. Vacuum all sanding dust.

**3) Seal it:** Seal the surface with the sealer/top coat that's best for your project. See container directions for complete details.



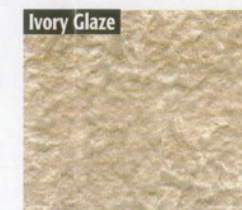
Raw Grey Rolled

Slip-resistant rolled SpreadStone texture in Raw Grey. Sanded and then sealed.



Oceanic

SpreadStone texture in Gunite. Sanded then "sponge highlighted" with White before sealing. (Optional. Info at right)



Ivory Glaze

Rollled SpreadStone texture in Ivory. Dried then lightly top-rolled with White. (Optional. Info at right)

## INTERMEDIATE

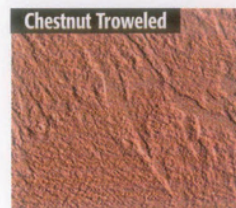
- You're comfortable using a trowel
- You don't mind working on your knees
- YOU DON'T MIND BEING SOMEWHAT CREATIVE
- You like to create an attractive textured surface fairly quickly



**1) Trowel it:** Spread SpreadStone<sup>®</sup> onto the primed surface at about 1/16" thickness. As you progress, the trowel should naturally create random textural interest.

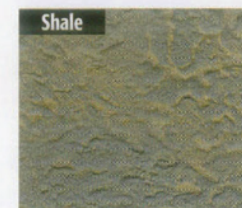
**2) Sand it:** Sand the finish (with 80 grit sandpaper) to refine the texture and create a smoother stone or ceramic appearance. Vacuum all sanding dust.

**3) Seal it:** Seal the surface with the sealer/top coat that's best for your project. See container directions for complete details.



Chestnut Troweled

Troweled SpreadStone texture in Chestnut. Sanded and then sealed. Simple one color applications like this are an easy, attractive way to dress up any surface.



Shale

Troweled SpreadStone texture in Cool Grey. Sanded then lightly sponge highlighted with Mojave Sand before sealing. (Optional. Info at right)



Arizona

SpreadStone texture in Almond. Dried then sponge highlighted with Mojave Sand. (Optional. Info at right)

## ADVANCED

- You enjoy being creative
- You're comfortable with a trowel
- You enjoy working with blends of color and texture
- It's OK if the project takes a little bit longer to complete



**1) Blend it:** This step is just a continuation of the intermediate method shown above. As you apply the base coat, blend a second color randomly into the wet material.

**2) Stipple it:** With your mix color blended in, simply pat the wet surface with the flat of your trowel to create a texture.

**3) Smooth it:** Use a plastic smoother to lightly flatten the wet peaks. This creates an authentic stone or ceramic texture. When dry, use optional faux effects (see right), if desired, then sand, vacuum, and seal as usual.



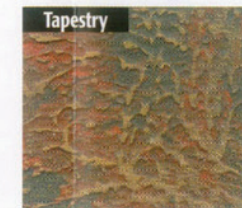
Morning Mist

Troweled "Dolphin" base coat with random blends of "Almond." Dried, sanded and sponged with "Rivershore".



River Rock

Troweled "Raw Grey" base coat with random blends of "Mojave Sand." Dried, sanded and sponged with "Dolphin".



Tapestry

Troweled "Gunite" base coat with random blends of "Burnt Orange." Dried, sanded and sponged with "Rivershore".

## OPTIONAL FAUX EFFECTS



**Roll-Over Blending** (for rolled SpreadStone finishes): Other colors can be rolled on after the first color has dried completely. This can create beautiful multi-toned faux effects and very authentic ceramic tile or stone textures! See complete instructions for full details.



**Sponge Highlighting:** This is an easy way to add an attractive accent color and beautifully highlight the stone-like texture of your SpreadStone<sup>®</sup> finish. See complete instructions for full details.



**Color Washing:** This is another fun, easy way to make your SpreadStone stone texture really stand out! Just mix DAICH "Color Wash Powder" with water and apply. See complete instructions for full details.